

PIH HEALTH SUCCESSFULLY LAUNCHES CDI PROGRAM THROUGH NAVIGANT ENGAGEMENT

CHALLENGE

A provider's clinical documentation improvement (CDI) program is vital to its revenue cycle health. A strong CDI program can fix the gaps in cost and quality reporting and — given the amount of change related to electronic health records, ICD-10 and recovery audit contractor audits — there is added impetus for a laser-focused program to target quality documentation and accurate reimbursement. Trained CDI specialists review clinical documents and provide feedback to physicians as part of an ongoing effort to maintain the quality of documentation and provide certainty that the care delivery corresponds to the diagnoses being made.

In 2017, PIH Health partnered with Navigant to launch a new CDI program. The initiative required additional CDI specialists who needed training and support.

SOLUTION

Working with Navigant, the CDI specialists at PIH Health underwent a seven-week training period onsite that included formal classroom education on all Medicare Severity-Diagnosis Related Groups, CDI strategies, and the compliant query process. Additionally, the specialists benefitted from mentoring and one-on-one shadowing — guidance that assisted them in their daily workflow process.

The program's new workflow design included best practice CDI record review and placement of compliant queries, actions that proved to increase productivity over time. To continue the success and growth of the CDI program, a steering committee was developed that fosters ongoing interaction of the executive team and the CDI specialists. Auditing will be scheduled by the leadership team as part of the oversight function.

“Our CDI program has enabled us to ensure complete and accurate capture of clinical documentation in our patients’ medical records. Navigant was instrumental in helping us to develop our program. We continue to initiate programs that focus on our mission to serve and depend on business partners that assist us in meeting our goals.”

COLE CHRISTIANSON
VICE PRESIDENT, REVENUE CYCLE
PIH HEALTH

About PIH Health

PIH Health is a nonprofit, regional healthcare network that includes two hospitals, numerous outpatient medical offices, a multispecialty medical (physician) group, home healthcare services and hospice care, as well as heart, cancer and emergency services. PIH Health is dedicated to putting patients first—a cornerstone of its [mission, vision and values](#). Its facilities in Whittier and Downey, California, serve more than two million residents in Los Angeles and Orange County and throughout the San Gabriel Valley.

About Navigant

Navigant Consulting, Inc. (NYSE: NCI) is a specialized, global professional services firm that helps clients take control of their future. Navigant's professionals apply deep industry knowledge, substantive technical expertise, and an enterprising approach to help clients build, manage and/or protect their business interests. With a focus on markets and clients facing transformational change and significant regulatory or legal pressures, the Firm primarily serves clients in the healthcare, energy and financial services industries. Across a range of advisory, consulting, outsourcing, and technology/analytics services, Navigant's practitioners bring sharp insight that pinpoints opportunities and delivers powerful results. More information about Navigant can be found at navigant.com.

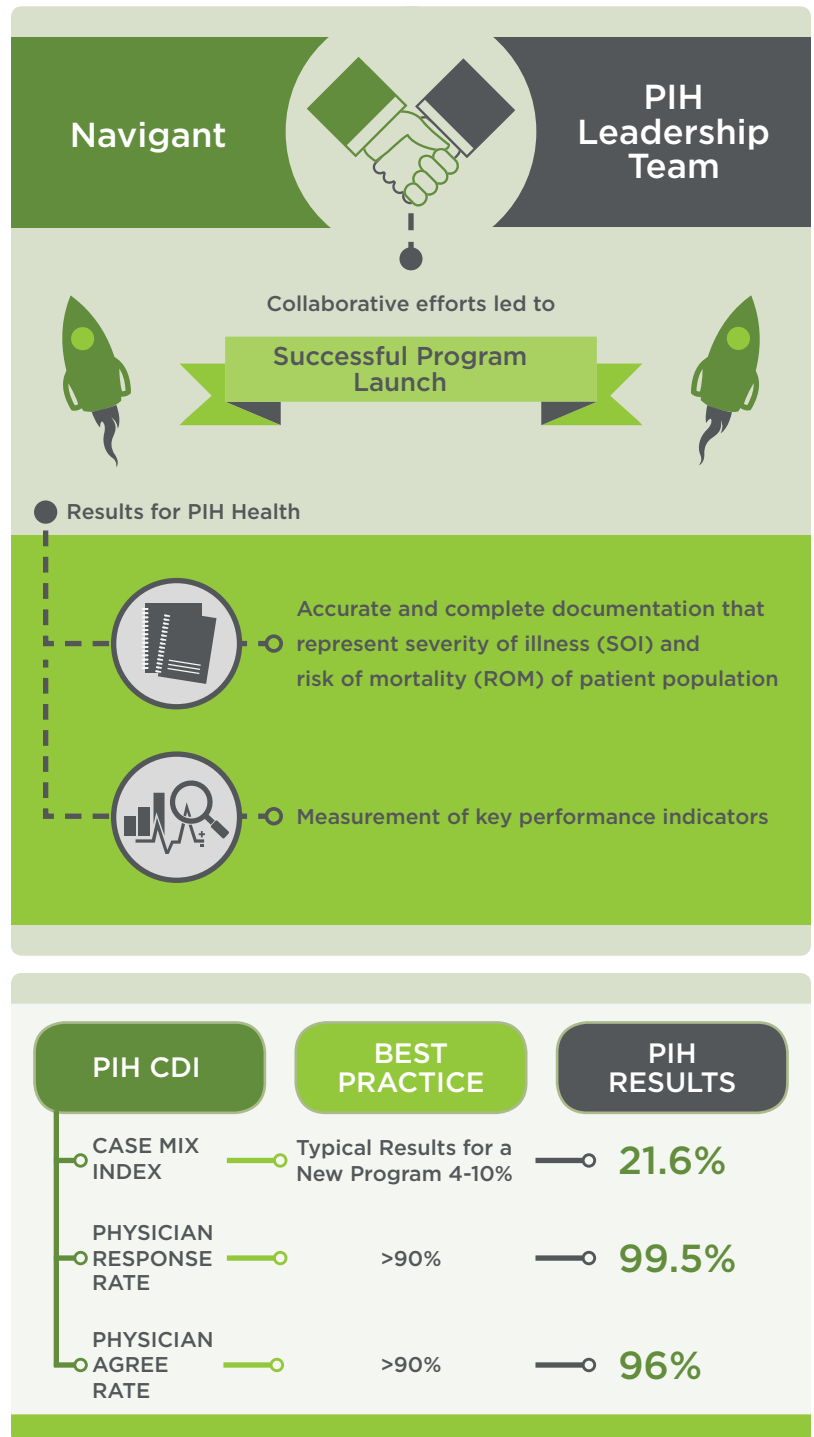
navigant.com

 healthcare@navigant.com

 [linkedin.com/company/navigant-healthcare](https://www.linkedin.com/company/navigant-healthcare)

 twitter.com/naviganthealth

RESULTS



©2019 Navigant Consulting, Inc. All rights reserved. W100785

Navigant Consulting, Inc. ("Navigant") is not a certified public accounting or audit firm. Navigant does not provide audit, attest, or public accounting services. See navigant.com/about/legal for a complete listing of private investigator licenses.

This publication is provided by Navigant for informational purposes only and does not constitute consulting services or tax or legal advice. This publication may be used only as expressly permitted by license from Navigant and may not otherwise be reproduced, recorded, photocopied, distributed, displayed, modified, extracted, accessed, or used without the express written permission of Navigant.